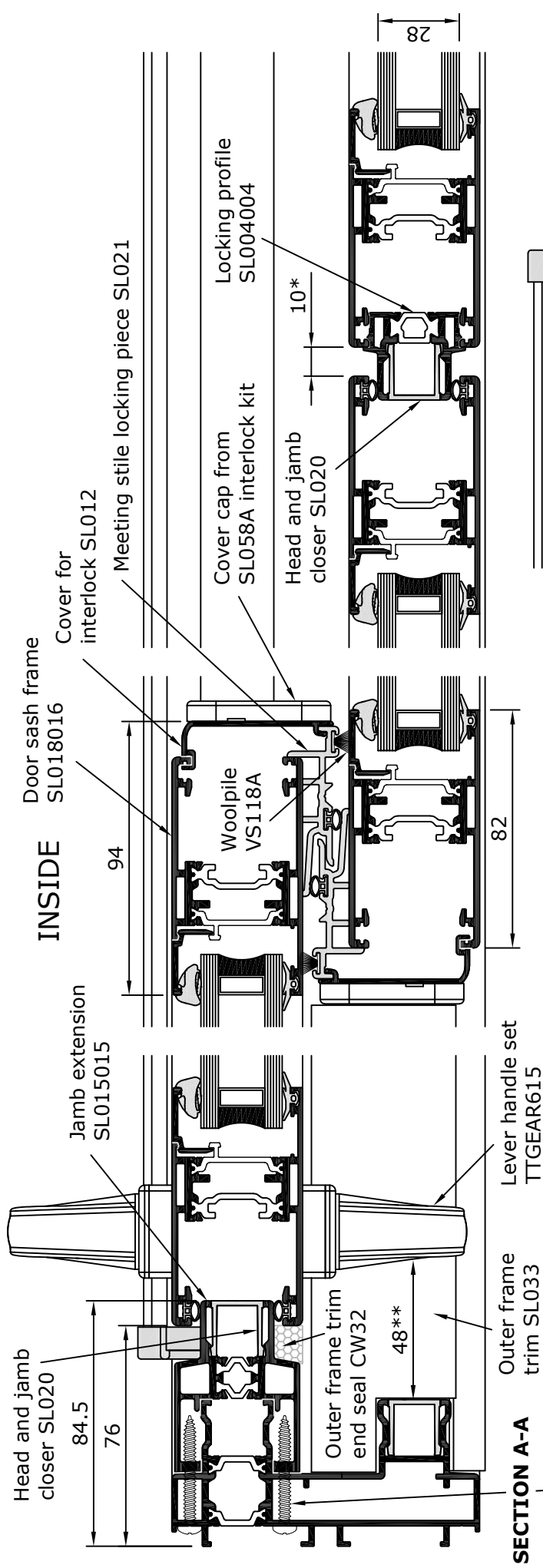
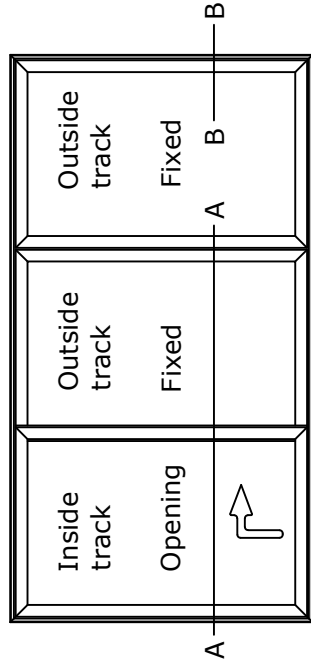


General Arrangement

Lift and Slide / Fixed / Fixed (Inside pane sliding with internal and external handles)



No 8 x 38mm pan head self tapping screws 7235 positioned 75mm from the corners at maximum 300mm centres.



* Tolerance to be in accordance with gearing manufacturers recommendations.

** Jamb extension SL015015 is required to avoid fingertrap between external handle and outer frame.

Scale 1:2